



Hands-On South Africa

Into the *Wild*LIFE

MARCH 29 - APRIL 12, 2025



DISCOVER WILD AND AUTHENTIC DESTINATIONS BY PRIVATE AIR

Conservation, Cultural Appreciation, and Impactful Experiences



Hello Bushtracks Explorers,

In recent months, Bushtracks has been busy advancing conservation in Africa through several initiatives. Our latest project, "Into the *WildLIFE*," offers a new type of expedition that allows travelers to immerse themselves in a specific geographic area and make a positive impact through tourism. These trips focus on protected areas in diverse destinations, stitched together by private air, with unique opportunities to go behind the scenes and learn first-hand about ongoing efforts in wildlife conservation and restoration of ecosystems. "Into the *WildLIFE*" takes our travelers beyond simply viewing wildlife from a safari vehicle to provide a deeper, more conscious look at these magical places and what it takes to preserve them.



Darting an elephant for medical check and collaring.

Your safari dollar has a direct impact on the projects that preserve and protect the land, flora, and fauna of each destination, and which help surrounding villages thrive. As an example, almost three-quarters of Babanango Game Reserve is community-owned, and income from reserve lease fees financially supports these communities. Each of the reserves you will visit on Hands-On South Africa is home to vulnerable animal species and important habitat, and part of your expedition cost directly supports critical conservation efforts.



Based on the conservation needs of the day, travelers will participate in a variety of hands-on initiatives which might include joining helicopter surveillance flights, assisting with animal collaring or rhino ear notching, or planting native vegetation.

Conservation has been at the heart of our mission since Bushtracks was founded over 30 years ago. Our Into the *WildLIFE* series propels that mission forward, making more effort than ever before, and we are just getting started.

We hope you'll venture with us Into the *WildLIFE*.

David

David Tett, Founder

\$39,895 PER PERSON

\$6,300 SINGLE SUPPLEMENT

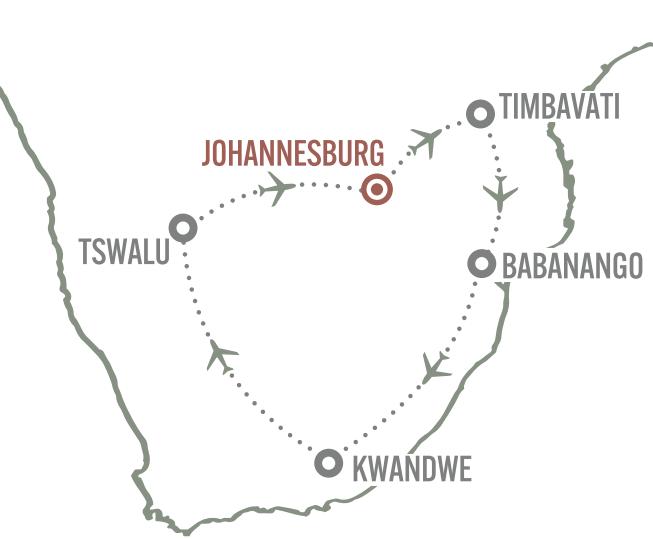


16 GUESTS



15 DAYS



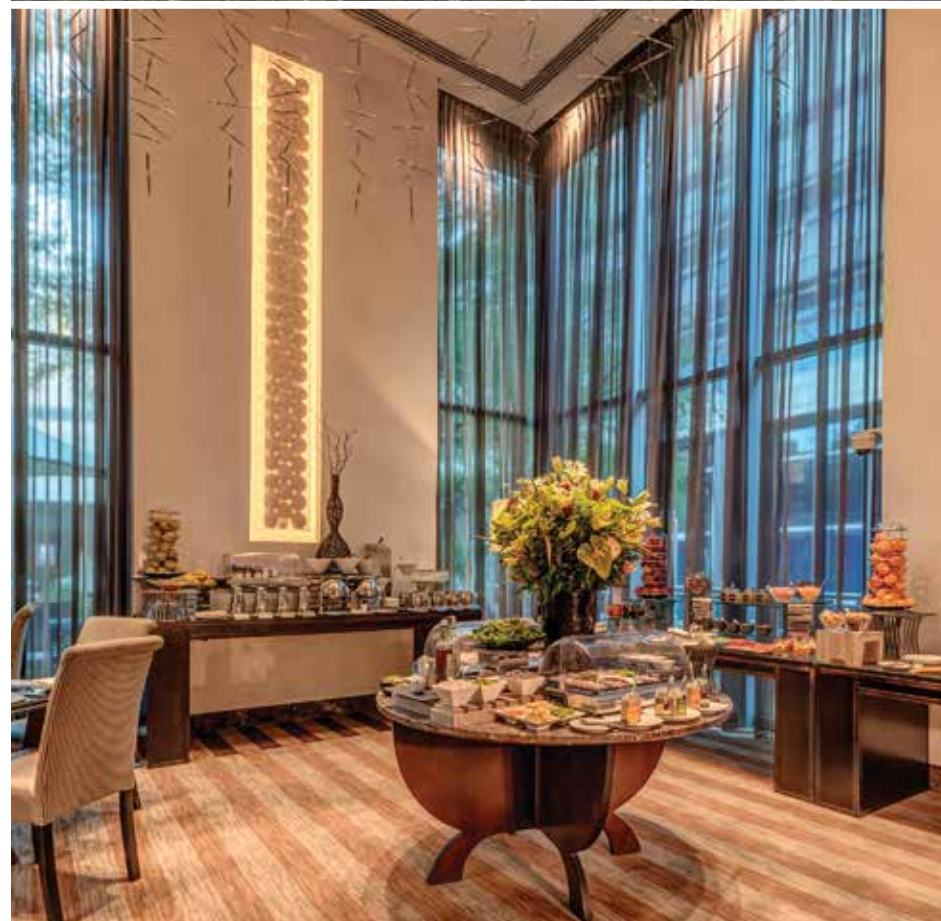


MARCH 29

Johannesburg

GATEWAY TO SOUTH AFRICA

Begin your adventure in Johannesburg, South Africa's main travel hub. Enjoy an evening at leisure and recover from international travel.



MARCH 30 - APRIL 2

Timbavati

PRIVATE NATURE RESERVE

After meeting fellow travelers at our welcome breakfast, we'll board a short charter flight to Hoedspruit, a charming town on the edge of the Timbavati Private Nature Reserve. This 135,000-acre wilderness is known for exquisite game viewing thanks to prolific and diverse wildlife - including populations of big cats, African wild dogs and elephants - in combination with a low density of visitors and game viewing vehicles. Join a Timbavati field ranger on a helicopter patrol flight and learn about the importance of this "eye in the sky". Engage in a conversation with renowned wildlife vet Dr. Peter Rogers, who will speak about his involvement in critical wildlife rehabilitation and translocation efforts. We'll go "hands on" with an exciting conservation activity, depending on the reserve's needs at the time. At night, enjoy the serenity of the bush and stargaze the southern hemisphere night sky.



INTERCONTINENTAL
JOHANNESBURG O.R.
TAMBO AIRPORT

Conveniently located less than 250 feet from the international arrival hall, the upscale InterContinental Johannesburg O.R. Tambo Airport features well-appointed soundproof rooms with king beds and blackout curtains for a comfortable rest.



TANDA TULA SAFARI CAMP

Tanda Tula Safari Camp sits on the banks of the seasonal Nhlalalumi River. Tanda Tula means "to love the quiet," and the camp truly delivers. Secluded canvas and glass suites feature private decks and heated plunge pools in a peaceful setting overlooking the riverbed.





APRIL 2 - 5

Babanango

GAME RESERVE

The newly established Babanango Game Reserve undertook ambitious conservation efforts that have paid off in a remarkable way, recently achieving “Big 5 Status” with the reintroduction of elephants, a species not seen in this area for almost 150 years. The reserve’s conservation team has been working tirelessly since 2019 to restore the reserve’s biodiversity, starting with the reintroduction of buffalos, and white and black rhinos. In early 2023, the reserve facilitated ‘The Return of the King’, introducing two male lions soon to be joined by females. Accompany a wildlife monitoring crew tracking black rhinos and elusive cheetahs and experience a thrilling safari adventure in an ecosystem on its way to former glory. And history buffs can join an engaging tour of Isandlwana and Rorke’s Drift - major battle sites in the 1879 war between the British Empire and the Zulu Kingdom.



MADWALENI RIVER LODGE

Nestled along the banks of the White Umfolozi River, beautifully appointed tented rooms at Madwaleni River Lodge feature private heated plunge pools and breathtaking views of large, molded river rocks complemented by lush hills.



APRIL 5 - 9

Kwandwe

PRIVATE GAME RESERVE

Journey to the Great Fish River Valley, an ancient haven for black and white rhinos, and take a deep dive into understanding the threat of poaching which has demanded constant protection for these magnificent animals. Kwandwe Rhino Conservation Trust employs environmental educators, full-time monitors, and specialized counter-poaching teams with canine units and advanced technology assets to prevent and detect poaching threats. Experience their efforts firsthand as you embark on a rhino conservation safari with opportunities to get “hands on” and participate in the rhino notching program. Once the target animal is darted, we’ll join the Kwandwe vet team at the scene to assist with microchipping the horns and notching the ears – essential tasks for enhanced identification and protection.



GREAT FISH RIVER LODGE

Perched above a majestic perennial river, spacious suites at the elegant Great Fish River Lodge are designed to showcase the magnificent setting. Enjoy uninterrupted views from your private deck and watch kudu and nyala graze near the riverbanks below.





APRIL 9 - 12

Tswalu Kalahari

GAME RESERVE

We conclude our epic journey at the iconic Tswalu Kalahari Game Reserve for a chance to observe unusual wildlife such as desert black rhinos, black-maned lions, and brown hyenas, as well as burrowing species like meerkats and aardvarks. Tswalu straddles a unique transition zone between the desert and arid savanna landscapes bisected by the Korannaberg Mountains thus providing a variety of unique and unspoiled habitats in what is called “the green Kalahari”. The desertscape is particularly enlivened at this time of year as the region emerges from the rainy season. Meet scientific researchers and participate in a conservation activity as determined by priorities at the time of our visit. Take a horse-riding safari or visit important rock art sites and learn about the San bushmen culture – there are many ways to explore the reserve and to design your own adventure! On our final night, we celebrate our journey together with a farewell dinner at Restaurant Klein JAN which artfully showcases the region’s unique heritage foods.

THE MOTSE

The Motse embodies serenity and casual elegance. Each spacious suite features a private shaded veranda with day bed – perfect for gazing across the desert landscape during the day, and stargazing at night.



Expedition Information

PHYSICAL REQUIREMENTS

Participants must be able to climb into and out of private aircraft, helicopters and safari vehicles un-aided. Also, they must be able to climb up and down stairs without a railing. They should be fully mobile and capable of walking moderate distances at an easy pace, at times over rough terrain, and be able to withstand hard riding four wheel-drive vehicles that travel over dirt roads and sometimes rough, bumpy ground.

PRIVATE AIR

Our chartered flights utilize light aircraft in commuter configuration. The flight schedule may include unscheduled stops due to factors such as weather or fuel availability beyond the crew’s control. Flight schedules can also change at any time should security or other issues arise. The type, model, and registration of the aircraft is subject to change.

COST INCLUDES

All accommodations, meals, guide fees, park fees, community fees, tour transfers, and private air travel as indicated in the detailed itinerary; the services of Bushtacks expedition staff and local guides; all group activities and excursions; private group airport transfers to/from Johannesburg airport; drinking water (bottled water not always available), coffee and tea throughout the journey; local brand alcoholic beverages at group meals; limited laundry, where available, at two-night stays or more; all airport departure taxes; all gratuities during group activities and for the expedition staff; portorage of one soft-sided checked bag; medical evacuation insurance (\$100,000) and Medical/Sickness (\$25,000 per incident) for covered reasons; 30-day MEDJETAssist membership.

COST DOES NOT INCLUDE

International air to and from Johannesburg and any other commercial flights that are not part of the program; excess baggage fees; travel and personal insurance; portorage of carry-on luggage; items of a personal nature such as curios, spa and room service expenses, minibar charges, and express laundry services; premium brand drinks; communication costs; costs of obtaining passports, visas, or other travel documents; inoculation fees; extra beverages, meals, or gratuities when not with the group; extra tours and activities.

BUSHTRACKS EXPEDITIONS | EST. 1989

The Bushtracks Difference

A Bushtracks private air expedition is an exhilarating adventure - an authentic, personalized experience that transports you into pristine wildlife habitats and remarkable landscapes.

Planned by experts, and accompanied by dedicated naturalists, you'll discover a uniquely wild world and vibrant communities.

- 1% of your private air expedition cost is donated to conservation, to help ensure wildlife and wild lands are preserved for future generations.
- With six generations of African heritage, we've designed high-quality expeditions for 30 years that deliver an authentic and wild safari experience.
- Our personalized expeditions have earned us a referral rate of over 60% and the trust of partners like African Wildlife Foundation and National Geographic Expeditions.
- We are private air specialists. With more than 30 years of experience in aviation, we can design efficient flight routes that save travel time and allow more time exploring each destination.
- We are a family-owned travel operator that has long-standing relationships with premier camps and lodges, and a team of planners with insider knowledge who thoughtfully construct each private jet expedition.
- As a U.S. registered company, your travel investment is protected in a U.S. Traveler's Trust account with FDIC insurance. We also eliminate currency fluctuations and monitor your trip from start to finish.

1% for Conservation

TO HELP ENSURE WILDLIFE AND WILDLANDS THRIVE

Bushtracks is proudly partnering with Wildlife Conservation Network, an innovative non-profit organization that protects endangered species by supporting conservationists who ensure wildlife and people coexist and thrive. Wildlife Conservation Network supports projects in 78 countries and has helped 92 species through its Partner Network and Wildlife Funds.

Booking with Bushtracks means traveling on a sustainable safari that contributes 1% of the trip cost to WCN's wildlife and community projects.

Upon returning home, travelers will receive a letter with the donation amount which can be allocated to the project of their choice at Wildlife Conservation Network - making their journey, and their footprint in our destinations, impactful.



HANDS-ON SOUTH AFRICA | 2025

HOW TO JOIN US

1. Call us toll free at 800 995 8689 or +1 707 433 4492, or contact your professional travel advisor to obtain our reservation package which contains all the information you need to get started. You may also email our Private Air team: safariexperts@bushtracks.com

2. A deposit of \$5,000 per person, a completed Reservation Form and a signed Participation Agreement are required to confirm your registration. Final payment is due 98 days before departure. For your protection, funds will be placed in a trust account and be used exclusively, until the day of departure, to fund deposits and final payments to suppliers that are required to secure your place on the expedition.

3. Get ready for an incredible adventure!

QUESTIONS?

A Bushtracks Journey Expert is available to speak with you Monday through Friday, 8:30 a.m. to 4:30 p.m. Pacific Time.

DATES DON'T WORK?

Call us, or contact your professional travel advisor, and we can craft a customized travel experience around your preferred dates.



Bushtracks provides a complimentary 30-day membership to Medjet for medical evacuation services in the event you are hospitalized for injury, illness or Covid-19 while traveling. Medjet flies you to the home hospital of your choice.





PRST STD
US Postage PAID
PERMIT #XX
Santa Rosa, CA

1083 VINE STREET, SUITE 901
HEALDSBURG, CA 95448, USA

6 Generations of African Heritage

Bushtracks Expeditions was founded by the Tetts, whose family goes back six generations in Africa. This means each Bushtracks safari is an authentic experience, planned by African insiders who are closely connected to the places, camps, and guides of Africa. These are wild places they know intimately - natural ecosystems with safari camps set in the best wildlife locations, and true to their African roots and traditions. Traveling with Bushtracks means you are introduced to hosts, guides and African personalities the Tetts have known for decades, who have a passion for living amongst wildlife, a dedication to conservation, and a spirit of sharing Africa's magic.



PRIVATE CUSTOM SAFARIS + EXPEDITIONS BY PRIVATE JET

TOLL FREE: 800 995 8689 | safariexperts@bushtracks.com | BUSHTRACKS.COM

INTERNATIONAL: +1 707 433 4492